

CONgenital CORvitia

Project group

BJM Mulder, AMC Amsterdam
 ET van der Velde, LUMC Leiden
 J Vis, ICIN
 CJM Engelfriet-Rijk, ICIN
 I Harms, ICIN
 S Mantels, ICIN



National registry and DNA-bank of adults
 with congenital heart disease
www.CONCOR.net



Steering committee

BJM Mulder, chairman, ICIN
 ET van der Velde, LUMC Leiden
 ECM Mariman, AZM Maastricht
 FJ Meijboom, Radboud UMC Nijmegen
 HW Vliegen, LUMC Leiden
 G Veen, VUMC Amsterdam
 PG Pieper, UMC Groningen
 HWM Plokker, St Antonius Hospital Nieuwegein
 APJ van Dijk, Radboud UMC Nijmegen
 JLM Stappers, AZM Maastricht
 JW Roos-Hesselink, EMC Rotterdam
 JGP Tijssen, AMC Amsterdam
 RMF Berger, UMC Groningen
 GJ Sieswerda, UMC Utrecht

Number of participating hospitals: 103
Number of included patients:
10,109

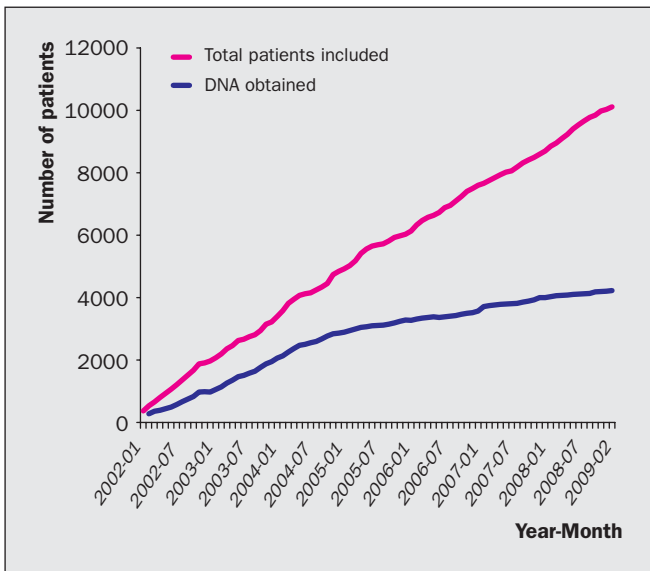


Figure 1. Progress of inclusion.

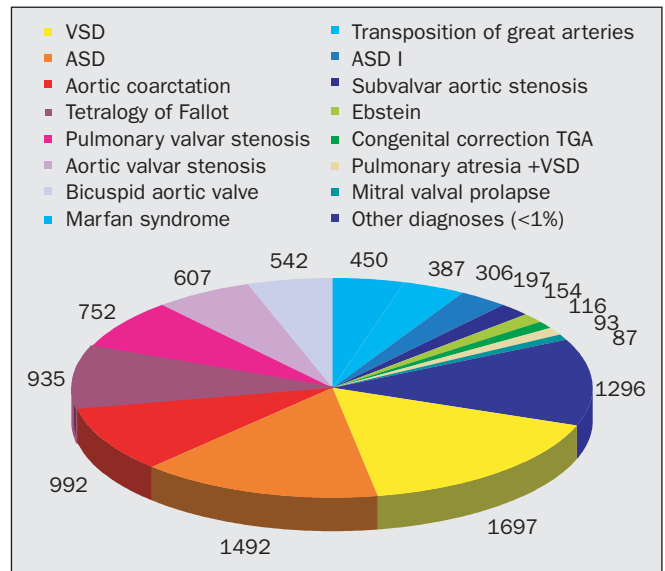


Figure 2. Most frequent main diagnoses.

The CONCOR registry and DNA-bank aid in the unravelling of genes involved in congenital heart disease.

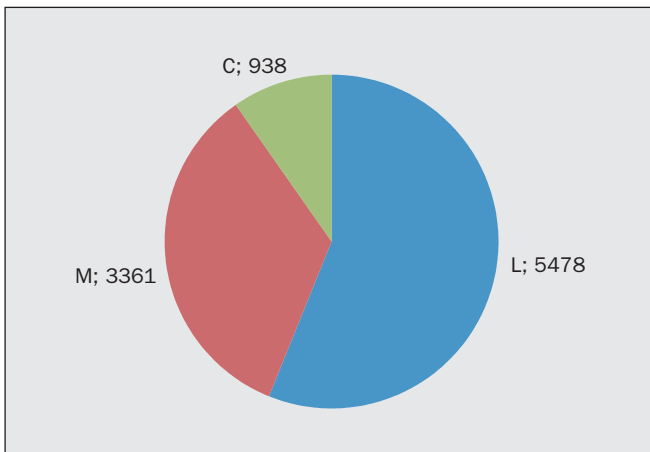


Figure 3. Distribution of main diagnoses (see figure 2) per severity: low (n=5478), medium (n=3361), and complex (n=938).

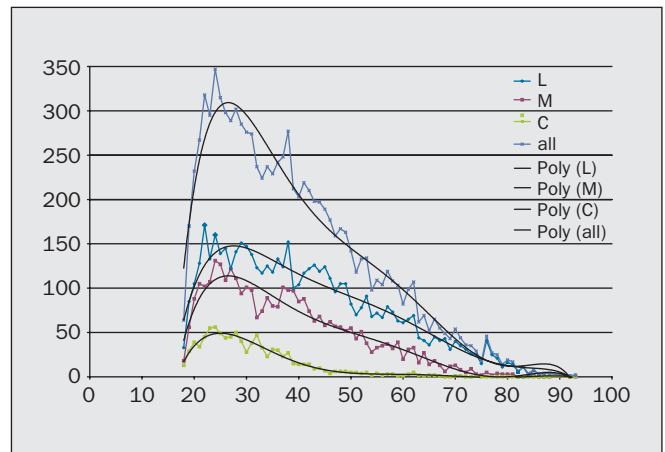


Figure 4. Age distribution of CONCOR patients per severity of defect (total, low, medium, complex).