

CONgenital CORvitia

Project group

BJM Mulder, AMC Amsterdam
 ET van der Velde, LUMC Leiden
 J Vis, ICIN
 CJM Engelfriet-Rijk, ICIN
 I Harms, ICIN
 S Mantels, ICIN



National registry and DNA-bank of adults
 with congenital heart disease
www.CONCOR.net



Steering committee

BJM Mulder, chairman, ICIN
 ET van der Velde, LUMC Leiden
 ECM Mariman, AZM Maastricht
 FJ Meijboom, Radboud UMC Nijmegen
 HW Vliegen, LUMC Leiden
 G Veen, VUMC Amsterdam
 PG Pieper, UMC Groningen
 HWM Plokker, St Antonius Hospital Nieuwegein
 APJ van Dijk, Radboud UMC Nijmegen
 JLM Stappers, AZM Maastricht
 JW Roos-Hesselink, EMC Rotterdam
 JGP Tijssen, AMC Amsterdam
 RMF Berger, UMC Groningen
 GJ Sieswerda, UMC Utrecht

Number of participating hospitals: **103**
 Number of included patients:
10,000

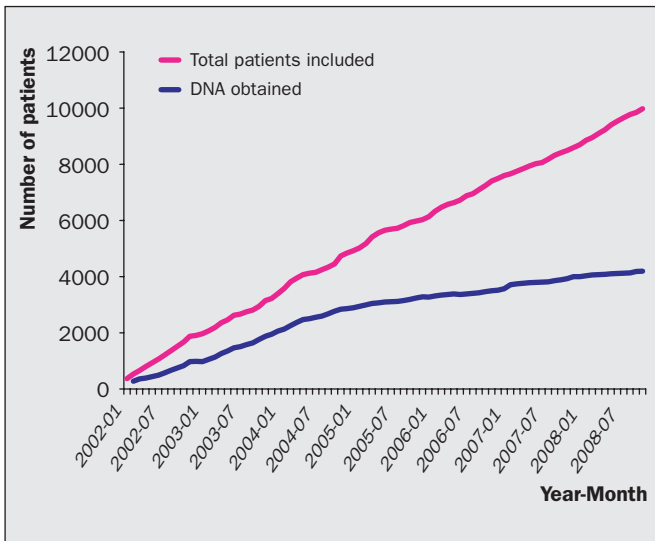


Figure 1. Progress of inclusion.



Figure 2. In December 2008, the 10,000th patient was included in the CONCOR registry!

The CONCOR registry and DNA-bank aid in the unravelling of genes involved in congenital heart disease.

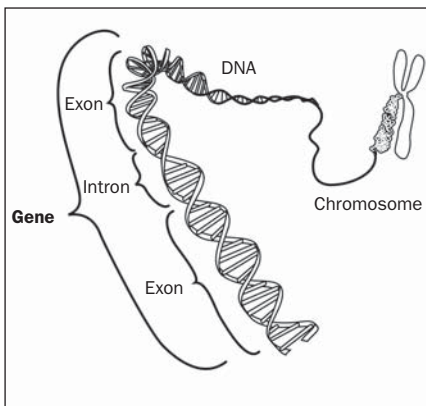


Figure 3. Human genetic material.

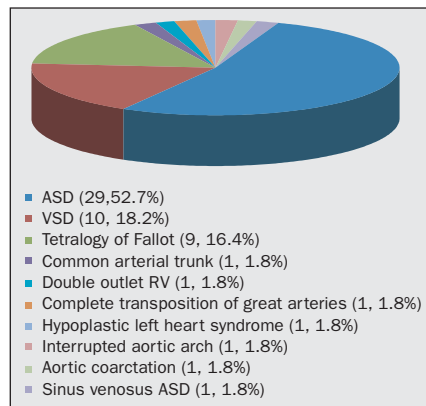


Figure 4. NKX2.5 gene: overview of non-syndromic associated CHDs.

Table 1. Genes currently associated with non-syndromic CHDs.

ACTC	HEY2
ANKRD1	JAG1
CFC1/CRYPTIC	MYH11
CITED2	MYH6
CRELD1	NKX2.5
ELN	NKX2-6
FOG2/ZFPM2	NOTCH1
GATA4	PTPN11
GDF1	TBX20
GJA1	THRAP2